

softmouse 3D



QUICK INSTALLATION GUIDE

GGGS

GLOBAL GE● SUPPLIES, INC

Package contents

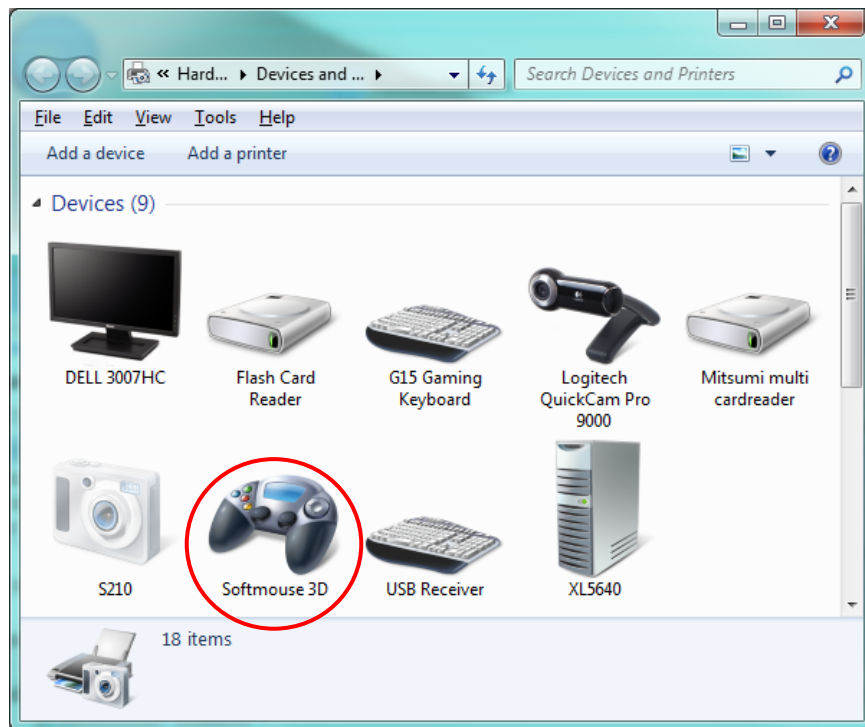
- Softmouse 3D – USB unit
- Teflon® coated mouse pad
- This Quick Installation Guide
- CD ROM with driver

Unpacking

Remove the Softmouse 3D – USB along with the Teflon® coated mouse pad. We strongly recommend the use of the mouse pad provided. It provides for the maximum comfort, smooth mouse movement and extended life of the mouse skids thanks to the low friction Teflon finish. To unpack the mouse pad lift the front bezel of the box. Replacement mouse pads of different sizes can be ordered from GGS or your nearest Softmouse distributor.

Installation

The installation of Softmouse 3D is very simple. Just connect it to an available USB port in your workstation or Laptop computer. Softmouse installs itself as a Joystick device. The following operating systems are supported: Windows XP Service Pack 2 or later and Windows 7, both in 32 and 64 bits.



Device list in Windows 7

Changing the X,Y resolution

Softmouse 3D allows to change the X,Y movement resolution expressed in Counts Per Inch, or CPI. With a large CPI a small mouse movement translates into a large cursor displacement on the screen. The CPI of Softmouse can be changed to 400, 800, 1200 and 1600 CPI. The factory default is 1600 CPI.

To change the CPI:

1. Unplug the mouse momentarily from the computer.
2. Press one of the key combinations depicted below.
3. While keeping the keys pressed plug the mouse again in the USB port of the computer.

The key combination is the right white button plus one of the side buttons as indicated in the diagram below. The new CPI will be memorized by Softmouse and will remain in effect until you change it again, even if you disconnect the mouse from the computer.



Plug the mouse pressing the key combinations above to change the mouse resolution

Note that cursor displacement is also affected by the scaling factor applied by your application software. If you find that your software can't adjust to an adequate cursor displacement you may need to reduce the CPI of the mouse with the method above.

Driver installation

NOTE: YOU MAY NOT NEED TO INSTALL THE DRIVER PROVIDED IF SOFTMOUSE 3D – USB IS ALREADY SUPPORTED BY YOUR SOFTWARE MANUFACTURER.

Before installing the driver included in the box consult your software manufacturer to find out if the USB model of Softmouse is already supported. If you are running a recent version of the software, released in late 2011 or newer, chances are that you don't need this driver.

If you determine that you need to install the driver load the CD ROM provided in your computer, read the README.TXT file for latest information and follow the instructions there.

When the driver is installed you can configure your application software to use the old SoftMouse classic (identified as **Immersion Mouse** in some programs) and select the COM port created by the driver.

Newer versions of the driver may be available for download at: www.geosupplies.com

Contact information

For installation help, technical assistance or mouse repairs contact us to:

Support@ggsnet.com

To order parts and accessories contact us to:

Sales@ggsnet.com

Or you can reach us to the phones below.

GGS

GLOBAL GE  SUPPLIES, INC

PO BOX 630105

Highlands Ranch, CO 80163-0105

USA

Tel: 303 792 5157 – Fax: 303 957 1913

www.geosupplies.com